

ENGINEER'S SEAL

SEALED VERSION ON FILE WITH THE CITY OF NEWARK IDENTICAL TO THIS IMAGE, but without the seal

I HEREBY CERTIFY THAT THESE DOCUMENTS WERE PREPARED OR APPROVED BY ME, AND THAT I AM A DULY LICENSED ENGINEER UNDER THE LAWS OF THE STATE OF DE. License No. 6938 Exp. Date: 06-30-16



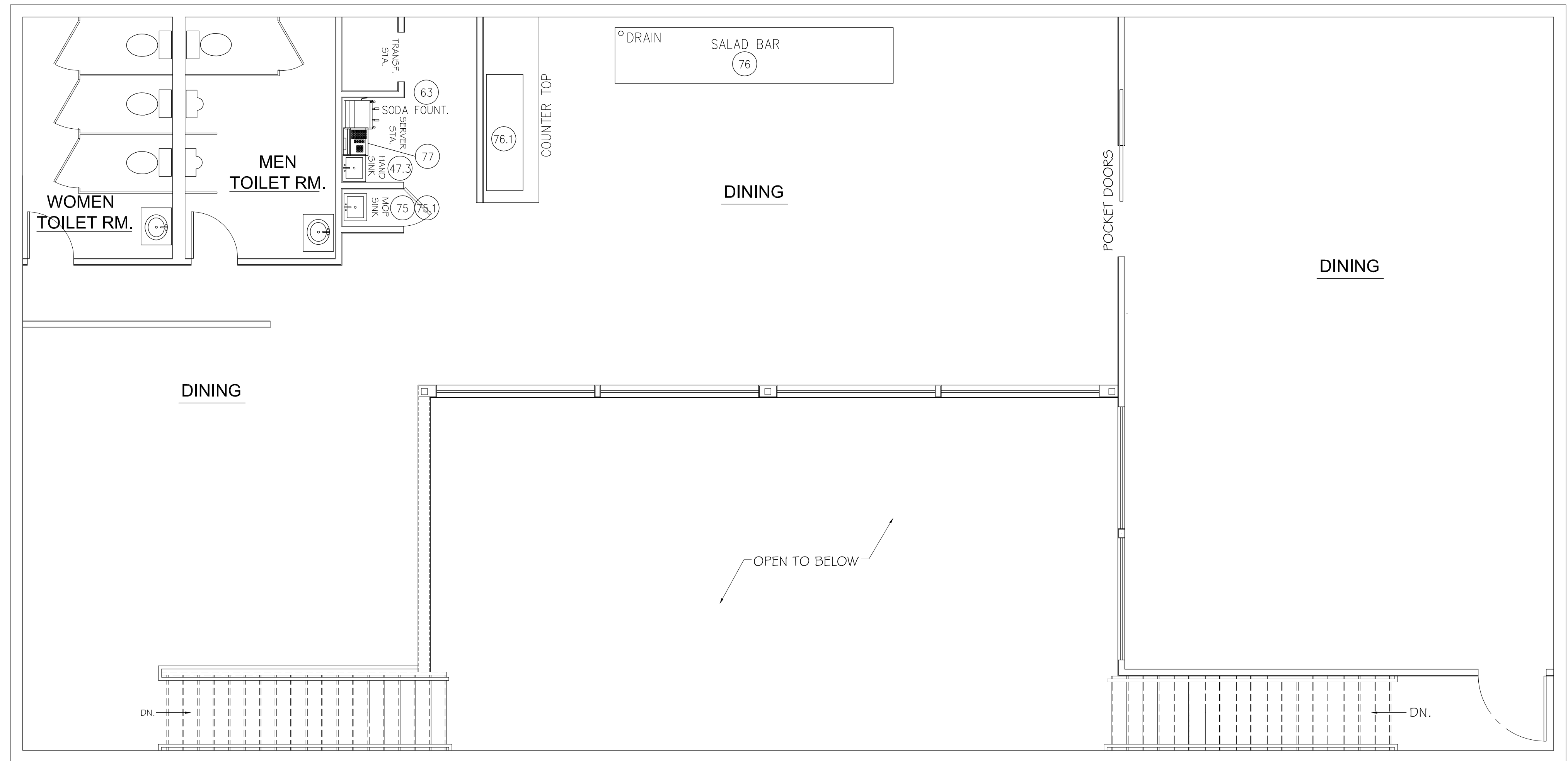
ALPHA ENGINEERING INC. P.O. BOX 669 BEAR DE. 19701 800-207-7647 4027 834-3344 WWW.ALPHA-ENGINEERING.COM FAX (302) 506-3561

REVISIONS: ASBUILTS 10/04/15

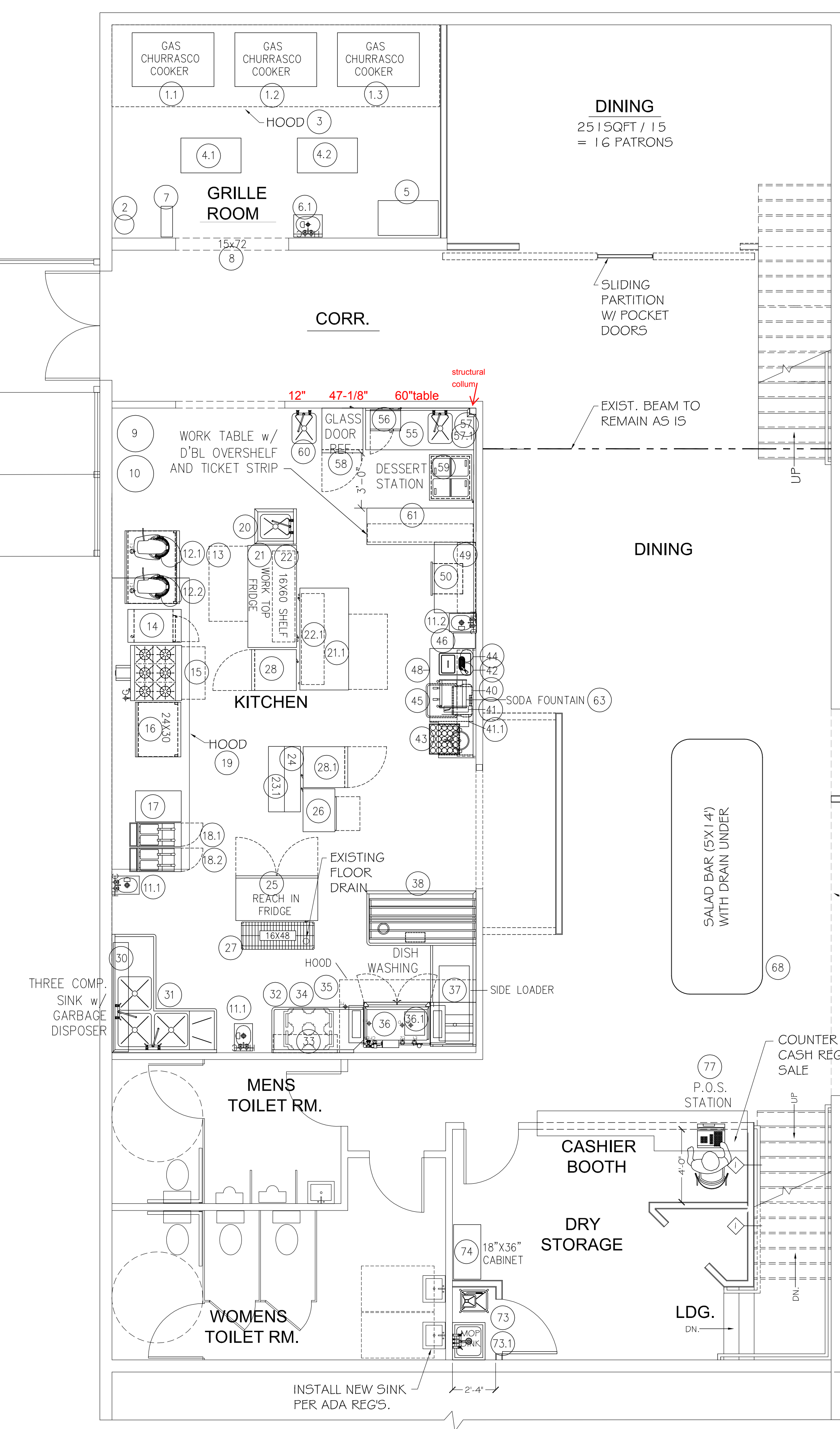
PROJECT: CHURASCARIA SAUDADES BRAZILIAN STEAK HOUSE PROJECT ADDRESS: 203 NEWARK SHOPPING CENTER NEWARK, NJ

SHEET NAME: EQUIPMENT PLAN

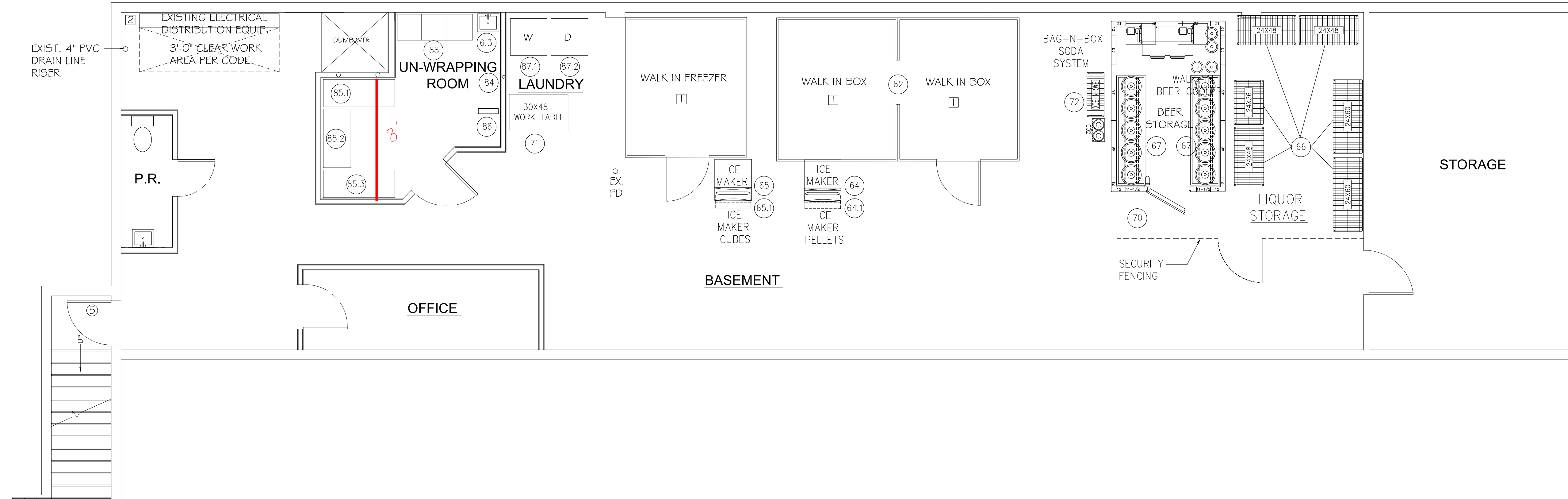
DESIGN BY: DRAWN BY: DATE: SCALE: SHEET # EQP.1



2ND FLOOR PLAN SCALE = 1/4" = 1'-0"



GROUND FLOOR PLAN SCALE = 1/4" = 1'-0"



BASEMENT PLAN SCALE = 1/4" = 1'-0"

GENERAL NOTES

- 1 CARPET FLOOR
2 WALLS TO BE REPAINTED.
3 REPLACE ACOUSTICAL CEILING TILES WHERE REQUIRED
4 PAINT CEILING TILES WHERE REQUIRED
5 PAINT FINISHED FLOORING MATERIAL WITH NEW
6 COUNTER TOP, MATERIAL SELECTION BY OWNER
7 FRP WALL PANELS (FIBERGLASS REINFORCED WALL PANELS)
8 FLOORING TO BE QUARRY TILE
9 TILE FLOORING

NET CAPACITY

WAITING AREAS = 29
MAIN DINING = 81
REAR DINING = 47
NUMBER OF PATRONS FIRST FLOOR = 157
DINING = 54
DINING = 55
NUMBER OF PATRONS 2ND FLOOR = 109
TOTAL NUMBER OF PATRONS = 266
STAFF / KITCHEN = 4
STAFF / GRILL ROOM = 1

GROSS BUILDING SOFT

FIRST FLOOR = 5,463 SOFT
SECOND FLOOR = 3,042 SOFT
BASEMENT = 2,541 SOFT
TOTAL = 11,046 SOFT

Table with columns: ITEM, DESCRIPTION, QTY, UNIT, PRICE, TOTAL. Lists various equipment items like churrasco cookers, refrigerators, and sinks.